

# PTC Creo® Object TOOLKIT Java

Extend and Automate PTC Creo Parametric™ and Direct Capabilities

With the PTC Creo Object TOOLKIT Java, you can quickly extend the functionality in PTC Creo Parametric and PTC Creo Direct™ and automate repetitive tasks with your custom applications.

PTC Creo Object TOOLKIT Java is a modern Java API to extend, automate, and customize a wide range of functionality from design through manufacturing. You can use this API to integrate PTC Creo Parametric and PTC Creo Direct with your business applications or to automate the production of design and production deliverables, thus improving designer productivity, reducing errors, improving product quality, and gaining a competitive edge.

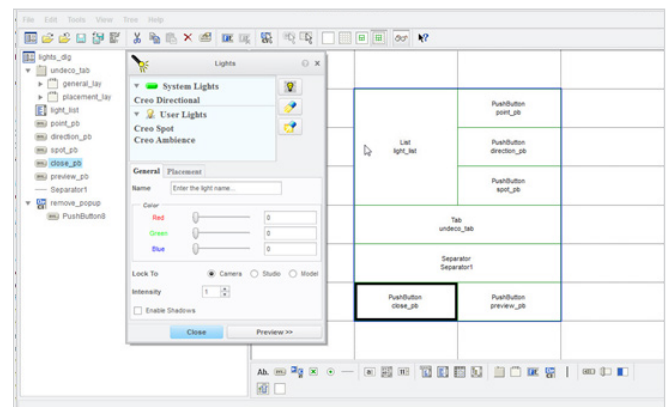
## Key benefits

- Customize and extend the PTC Creo user interface with seamlessly embedded custom processes
- Integrate PTC Creo with expert systems, knowledge-based applications, and other business applications
- Create automated, single-use, or derived designs by external manipulation of geometric and parametric constraints
- Access peer-to-peer communications for better application diagnosis
- Improve product quality with design rule verification based on inputs from external solutions

## Capabilities and specifications

### Key features

- Rich, powerful, and easy to use API
- Significant reduction in programming complexity – thus improving developer productivity and application quality



PTC Creo UI Editor

- Packaged with a Graphical UI Editor (PTC Creo UI Editor) to enable you to quickly design new dialogs and generate callback code
- Customizations are re-usable across PTC Creo Parametric and PTC Creo Direct – thus reducing the development and maintenance costs

## User Interface (UI) Customization

- Create new dialogs
- Add commands to the PTC Creo ribbon
- Add custom code to standard PTC Creo commands
- Add context sensitive commands to the RMB menus

## Session

- Menus
- Messages
- Session level listeners
- View and window manipulation
- Interactive election
- Custom Graphics and text
- Mouse input
- Command line arguments

## Models

- Operations and information
- Import / Export 2D and 3D formats
- Export Plot Files
- Access External Data
- Regeneration
- Model Level Listeners
- Cross Sections
- Analysis
- Layers
- Family Tables
- Relations
- Parameters
- Units

## Part

- Mass properties
- Feature creation

## Assemblies

- Component placement and constraints
- Simplified representations
- Exploded states
- Interference/clearance calculations

## Drawings

- Views
- Tables
- Sheets
- Notes
- Entities
- Groups
- Symbols

## PTC Windchill® interaction

### Platform support and system requirements

Please visit the [PTC support page](#) for the most up-to-date platform support and system requirements.

For more information, visit: [PTC.com/product/creo/toolkit](https://www.ptc.com/product/creo/toolkit)

© 2014, PTC Inc. All rights reserved. Information described herein is furnished for informational use only, is subject to change without notice, and should not be taken as a guarantee, commitment, condition or offer by PTC. PTC, the PTC logo, Product & Service Advantage, Creo, Elements/Direct, Windchill, Mathcad, Arbortext, PTC Integrity, Servigistics, ThingWorx, ProductCloud and all other PTC product names and logos are trademarks or registered trademarks of PTC and/or its subsidiaries in the United States and other countries. All other product or company names are property of their respective owners. The timing of any product release, including any features or functionality, is subject to change at PTC's discretion.

J3721-PTC Creo-Object-Toolkit-Java-DS-EN-0414